

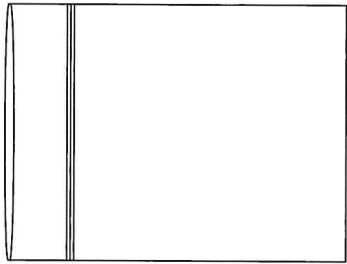
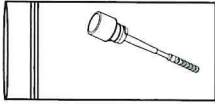
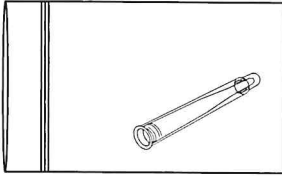
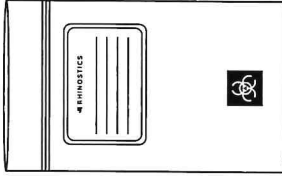
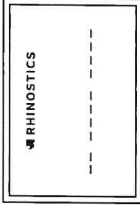
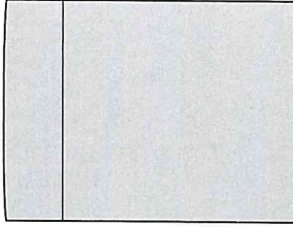


Information For Use

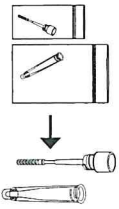
# RHINOstic nasal swab

The Rhinostics Nasal Swab is used to collect a sample for COVID-19 by yourself at home. Your physicians or health care provider has requested you be tested for COVID. Use the Rhinostic Nasal Swab to collect your sample following the instructions below and on the back of this sheet, place the swab in the addressed envelope provided and send your sample to the laboratory for testing. The lab will provide information for getting your results.

Open and organize your test kit on a clean surface. Discard kit if collection device packaging is torn. It should contain:

1	Holding bag	
2	Collection swab	
3	Collection Tube With 10 Digit Barcode	
4	Specimen bag with biohazard label	
5	Test kit number card (for you to keep)	
6	Mailer	

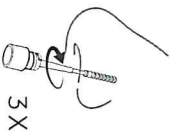
## STEP 1 Removal



1. Carefully remove the swab portion for sample collection from the polybag without touching the collection end of the swab.

2. Remove the transport tube from the package so that after collection it is ready for the sample to be placed into the transport tube.

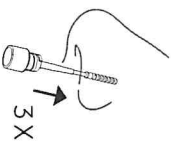
## STEP 2 Collect Sample



3. Hold the swab portion of the collection device by the cap and collect the sample as follows:

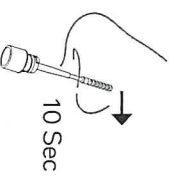
a. Insert the tip of the swab into one (1) nostril until pressure is felt in the nose. The swab should be placed just inside your nostril.

b. Rotate the swab around the inside of the nostril three (3) times being sure you are making firm contact with the inside of your nose.



c. Gently slide the swab up and down against the inside of the nose one time.

d. Firmly hold the swab against the inside of the nostril for ten (10) seconds.

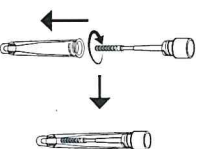


## STEP 3 Repeat



4. Repeat collection steps (a-d) in the second nostril using the same swab.

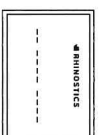
## STEP 4 Package & Seal



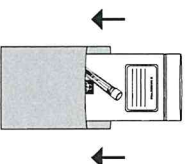
5. Remove the cap from the tube **and discard**. Replace the cap with the swab in the tube portion of the collection device.

6. Carefully screw the swab into the tube, so that it is completely closed. Make sure the tube is closed tightly.

7. Record the 10 digit identification number found on the side of the collection tube onto the card provided in the kit and retain for your records.



10 Digit



8. Place the collection tube into the ziplock specimen bag and close carefully. Write the date, your name, and 10 digit identification number on the label of the specimen bag, and place it in the shipping envelope provided to mail to the laboratory for testing.

9. The testing laboratory will provide you with instructions on how to receive your test result.